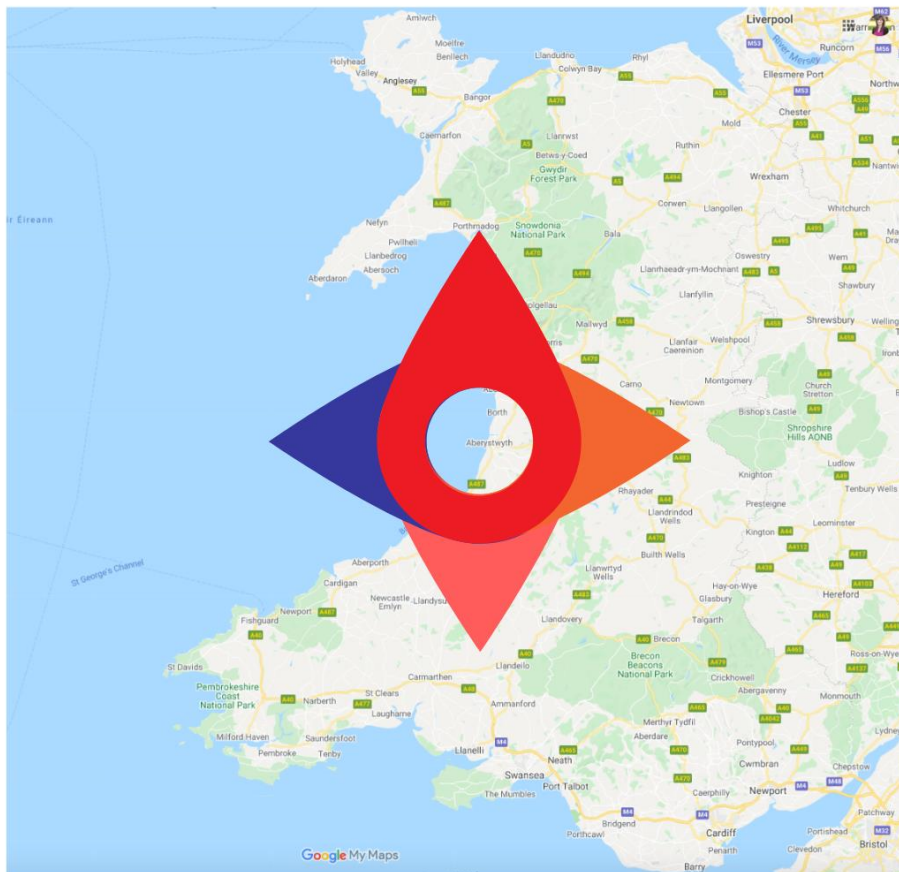


# Anthem.

## Initial mapping report: youth music and music education in Wales



Anita Holford, January 2020



[www.writing-services.co.uk](http://www.writing-services.co.uk)  
Communications | Writing | Marketing  
for music, arts, charities

01600 713758  
[anita@writing-services.co.uk](mailto:anita@writing-services.co.uk)  
[Twitter](#) @antanea [LinkedIn](#) /antaholford /dylanowen

# Index

<b>About this report</b>	<b>3</b>
<b>About the research</b>	<b>4</b>
<b>Executive Summary</b>	<b>5</b>
<b>Who’s involved</b>	<b>6</b>
<b>Map of those identified to date</b>	<b>8</b>
<b>About the survey respondents</b>	<b>9</b>
<b>Where their work takes place</b>	<b>9</b>
<b>Who is working where</b>	<b>10</b>
<b>Genres</b>	<b>12</b>
<b>Languages</b>	<b>12</b>
<b>Services /opportunities</b>	<b>12</b>
<b>Ages</b>	<b>13</b>
<b>Settings</b>	<b>13</b>
<b>Specialisms /areas of need</b>	<b>14</b>
<b>Numbers of young people they work with</b>	<b>14</b>
<b>APPENDIX</b>	
<b>A: Survey questions</b>	<b>15</b>

## About this report

This report summarises the results of an initial survey to provide a broad picture of the youth music and music education sector in Wales. It was commissioned by the board and interim CEO of [Anthem](#), the new fund set up by Welsh Government to invest in opportunities in music for young people in Wales. The purpose is to help Anthem to build a picture of who works with young people in music, where and how, to inform its strategy.

This is an initial snapshot at 20/1/20 – 55 people responded, although the survey stayed live after this report was created. The mapping had a fast turnaround (7 weeks), and Anthem's

networks and communications were in the early stages of development. There are many individuals and organisations this research hasn't yet reached, particularly individual music tutors /community musicians /animateurs, and grassroots youth work in local communities.

We hope that Anthem can work further with Music Partnership Forum Wales – an informal network of organisations involved in music education – to continue to build the picture through the sub-group mapping that the partnership has planned.

## About the research

### 1. Desk research:

Initial mapping database created based on researcher's knowledge, website research and asking contacts to recommend others who could be added to the database. 120 contacts in total (this has grown since this report)

Contacted Musician's Union, Youth Music, Arts Council Wales and ISM (Incorporated Society of Musicians) for relevant data on practitioners/organisations in Wales<sup>1</sup>.

### 2. Survey:

Survey created and published via SurveyMonkey, gathering

- contact data
- basic information about the nature of the work, and
- answers to a question about priorities.

Two surveys, English and Welsh language.

ENGLISH:

<https://www.surveymonkey.co.uk/r/3DJ7JBC>

WELSH:

<https://www.surveymonkey.co.uk/r/3WCPWRH>

---

<sup>1</sup> This was with the aim of gaining comparative figures for organisations/musicians working with young people through music and engaging with national bodies/funders. Data was only available from Youth Music, for the number of

organisations/individuals in England receiving funding in the last three years: which was 368.

### 3. Interviews

Follow up telephone calls or meetings with those who responded, 16 people in total, representing the following organisations (full list in Appendix):

Canolfan Gerdd William Matthias  
ArtWorks Cymru & Operasonic  
Lewis School Pengam Music Department  
Tŷ Cerdd  
Cardiff County and Vale of Glamorgan Music Service  
Gwent Music  
Pop Factory Porth / Valleys Kids  
John Rostron, promoter (Swn Festival and more)  
Benedetti Foundation  
Menter Iaeth Cymru  
Sound Sense  
RWCMD  
Arts Connection Powys  
Forte Project  
Community Music Wales  
Media Academy Wales

### 4. Promoting the survey:

- a) Bilingual email sent to all initial database contacts (38), additional emails sent as the database grew (estimated 15) asking people to:
  - complete survey
  - let us know if they'd like to take part in a follow up interview, and
  - whether they would be willing to offer a venue/space for youth consultation in March. See Appendix.
- b) Bilingual social media campaign to promote the survey involving setting up new/using existing Anthem social media accounts, creating bilingual posts, image cards, and slideshow video to gain attention and engagement, making use of @tagging key individuals/organisations to encourage sharing.

- c) Mentions in the following newsletters /personal emails:

- Arts Council of Wales news item - enews 11/12/19
- Arts Council of Wales news item - website
- Music:Ed website and news item
- SoundSense (UK association for community music) enews
- Personal email to all music services in Wales via Cagac Chair Emma Archer, Gwent Music
- Personal email to youth services via Helen Jones of CWVYS, Council for Wales of Voluntary Youth Services

### 5. Enews list for future communications

MailChimp list of those who responded 'yes' to being added to an enews list, has been created ready for future communications.

## Executive Summary

Despite the well-known and documented challenges for young people's music in Wales, the mapping has identified a great deal of activity.

As would be expected given the limited funding and strategy, this is often short-term and project-based, rather than having long-term strategic aims and outcomes.

The work is delivered by a wide range of providers:

- local authority music services and in rare cases, other local authority services;
- independent commercial or charitable music services;
- community arts/music organisations;
- community-based initiatives.
- national arts and music organisations, some of which are Arts Council of Wales' regularly funded (Arts Portfolio Wales) organisations;
- venues;
- individual music tutors/community musicians;
- youth work organisations;
- individual youth workers.

In total, 120 providers emerged through our initial research and mapping, and 55 people completed the survey (to date, 23/1/20).

Providers are inevitably clustered around the major towns and there appears to be little provision in particular in the north west and mid Wales – although this is based on mapping of survey respondents: a further analysis will need to be done to create a map for all of those researched for the database: researching postcodes in order to extend the map on page 8.

45% deliver work in Welsh; 27% do not; 27% said that they don't but could do.

There is a good spread of genre diversity, and Western Classical and Contemporary Commercial Rock/Pop dominate equally.

There is also a good spread of types of service/opportunity offered.

In terms of age groups worked-with, again there is a good spread but early years music has the least provision, delivered by just over one third of providers.

Most work takes place in schools, music/arts organisations and community spaces eg community centres/village halls, with other settings being used by less than one third of providers.

In terms of areas of specialism/need, the least well-served areas are asylum seekers, homeless, refugees, young parents, English as additional language, ill health, pupil referral units, challenging home circumstances, excluded from school, sensory impaired, traveller/Romany, young offenders/at risk of offending, with 5-17.5 per cent of practitioners saying they specialise in these areas. The areas of need which are most well served by respondents were economic deprivation, special educational needs, emotional or behavioural difficulties, with around 40-50% of providers stating these specialisms.

Views on needs and opportunities were not the main focus of the mapping, but we asked the question in both the survey and the follow-up interviews. A themed analysis of responses (which can be divided up in many ways) showed that inclusion/equality/equity in its many forms was the most highly mentioned need, followed by financial support for lessons/instruments; social, personal and wellbeing outcomes; and support for schools.

## Who's involved<sup>2</sup>

Through the initial mapping we have found or been told about 125 delivery organisations potentially working in music with young people in Wales:

### Local authority music services (14)

Cardiff County & Vale of Glamorgan Music Service  
 Bridgend Music Service  
 Caerphilly Music Service  
 Carmarthenshire Music Service  
 Ceredigion Music Service  
 Conwy Music Service  
 Denbighshire – see independent services below  
 Flintshire Music Service, Theatr Clwyd  
 Gwent (Newport, Blaenau Gwent, Monmouthshire, Torfaen)  
 Gwynedd & Anglesey – see independent service below  
 Gwasanaeth Cerdd Ysgolion (Schools Music Service)  
 Merthyr Tydfil County Borough Council  
 Pembrokeshire County Council Music & Sport  
 Powys – no music service  
 Neath Port Talbot (West Glam)  
 Rhondda Cynon Taf Music Service  
 Swansea Music Service

### Other Local Authority provision (3)

Forte Project (not a 'music service' but a local authority youth music initiative)  
 Caerphilly Arts  
 Arwen Trust, Bridgend

### Independent music services (5)

(music service-style offer eg formal music education tuition, groups/ensembles, but independent of local authority)  
 Canolfan Gerdd William Mathias (Gwynedd & Anglesey)\*  
 Denbighshire Music Coop  
 CAVMS Ltd (Cardiff & Vale)  
 Upbeat Music & Arts Service Ltd (South Wales)  
 Wrexham Music Co-operative

### National music/arts organisations (21)

trac : music traditions wales\*  
 national theatre wales\*  
 Sistema Cymru - Codi'r To  
 CânSing Ltd  
 Benedetti Foundation  
 Sinfonia Cymru\*  
 Tŷ Cerdd  
 RawFfest (Ruth Garnault ex-Director)  
 National Youth Arts Wales\*  
 Live Music Now Wales\*  
 Making Music  
 Music Theatre Wales  
 RWCMD  
 BBCNOW\*  
 WNO  
 Urdd Gobaith Cymru  
 Eisteddfod Genedlaethol Cymru  
 The Aloud Charity  
 Ensemble Cymru  
 Touch Trust  
 Mid Wales Opera

### Community music/arts organisations (10)

Community Music Wales\*  
 Head4Arts\*  
 Valley and Vale Community Arts\*  
 Arts Connection

Forget-Me-Not-Productions

Operasonic  
 Avant Cymru  
 Artis Community (RCT)\*  
 Citrus Arts  
 Rec Roc Caerphilly

### Venues (8)

Bethesda Theatre  
 Dolman Theatre  
 Maen Alaw (Community Centre)  
 Wales Millennium Centre\*  
 Venue Cymru  
 Pontio\*  
 Pontardawe Arts Centre  
 St David's Hall/ A2:Connect / Arts Active Trust

### Music tutors, community musicians, amateurs (freelance individuals) (11)

Sioned Foulkes, Vocal Animateur, incl. CânSing / WNO  
 Andrew Jones, freelance trumpeter, Music for You  
 Sarah Lewis, classical musician  
 Andrienna Straw  
 Alison Shone  
 Polly Graham  
 Gavin Porter  
 Keith Morell  
 Sheila Llewellyn  
 Stacy Blythe  
 Helen Woods

### Youth work organisations/individuals (9)

YMCA Swansea  
 Media Academy Cymru  
 Tanyard Youth Project Ltd  
 Sound Progression  
 Youth Cymru  
 Promo-Cymru  
 Valleys Kids\* / Pop Factory  
 Young Wales

<sup>2</sup> This page lists those who completed the survey (in blue) by 20/1/20, those who were interviewed (orange), as well as those we found through research. Although this was not the remit of this study, four schools also responded: Islwyn high school, St Mary's Ciw primary school, Coleg Llanyddyfri / Llandovery College, Lewis School Pengam. The survey was open to organisations based in other countries which work in Wales although few responded.

\* ACW Portfolio-funded organisations

David Jones

**Community-based organisations/individuals (24)**

Glyncoch Community Regeneration Ltd  
 Groupeez  
 Menter Caerdydd  
 Radio Platform  
 Young Music Makers of Dyfed  
 Menter Iaith Casnewydd  
 Tape Music & Film  
 KPC Youth and Community, Cwmbran  
 Making Music, Changing Lives  
 Play it Loud (Newport)  
 Ministry of Life (Cardiff)  
 Credu (Young Carers)  
 Menter Iaith Môn  
 Menter Iaith Blaenau Gwent  
 Torfaen Mynwy  
 Menter Iaith Rhondda Cynon Taf  
 Swansea MAD (media & digital)  
 Swansea Music Hub  
 Swansea Music Hub  
 Swansea School of Rock  
 St Woolas Choir, Newport  
 Roots Street Festival Bridgend  
 Urban Circle, Newport  
 AKMA Swansea

**Youth-led / voluntary organisations (2)**

Young Promoters Network  
 Youth Arts Network Cymru

**Non-delivery and/or umbrella organisations (9)**

Sound Sense, UK association for community music  
 British Council Wales  
 Guitar Circus  
 David Jones Associates (cultural commissioners)  
 Cerdd Cymru / Music Wales  
 NAWR  
 EDAU  
 Arts & Education SE Wales  
 Disability Arts Cymru

**Other (3)**

Gwent Arts in Health  
 Welsh Music Prize  
 Drake Music (England)  
 Rocksteady Music School (England)

**ACW portfolio-funded organisations<sup>3</sup> (17):**

(also listed in previous columns and marked with an asterisk\*)  
 Aberystwyth Arts Centre  
 Arts Care Gofal Celf  
 Ballet Cymru  
 Chapter Cardiff Ltd.  
 Cwmni'r Frân Wen  
 Galeri Caernarfon Cyf  
 Hafren  
 Jukebox Collective  
 The Riverfront - Newport Live  
 Theatr Brycheiniog  
 Theatr Clwyd  
 Theatr Felinfach  
 Theatr Genedlaethol Cymru  
 Theatr Iolo  
 Theatr Mwldan  
 Volcano Theatre Company Ltd  
 Ystradgynlais Miners' Welfare and Community Hall Trust Ltd

Also interviewed: Lewis School, Pengam, Menter Iaith Cymru, Ceri Tippetts RWCMD

**120 providers**

**136 in total including non-delivery organisations**

For comparison, the number of individuals/organisations that Youth Music have funded – ie those working with young people through music in England in the last three years is 368, including a small (but growing) number of music education hubs/music services. There are 122 music education hubs in England<sup>4</sup>.

There are 122 music education hubs in England.

<sup>3</sup> These ACW Arts Portfolio Wales organisations are listed separately, as the level of music work is unknown ie could be a one-off workshop. These do

not include organisations that ACW fund through their lottery grants.

<sup>4</sup> Our initial database is 33% of the Youth Music figure and number of respondents is 15%. The population of Wales (3.1

million) as a percentage of the population of England (66.5 million) is 4.8%. A raw estimate of the equivalent number of providers that might be expected in Wales is 17.



# Map of initial mapping contacts (January 2020)<sup>5</sup>

Available here: <https://drive.google.com/open?id=1PbvHwHGIUYjZUzAUQA5IAU9Os9VsOPM5&usp=sharing>



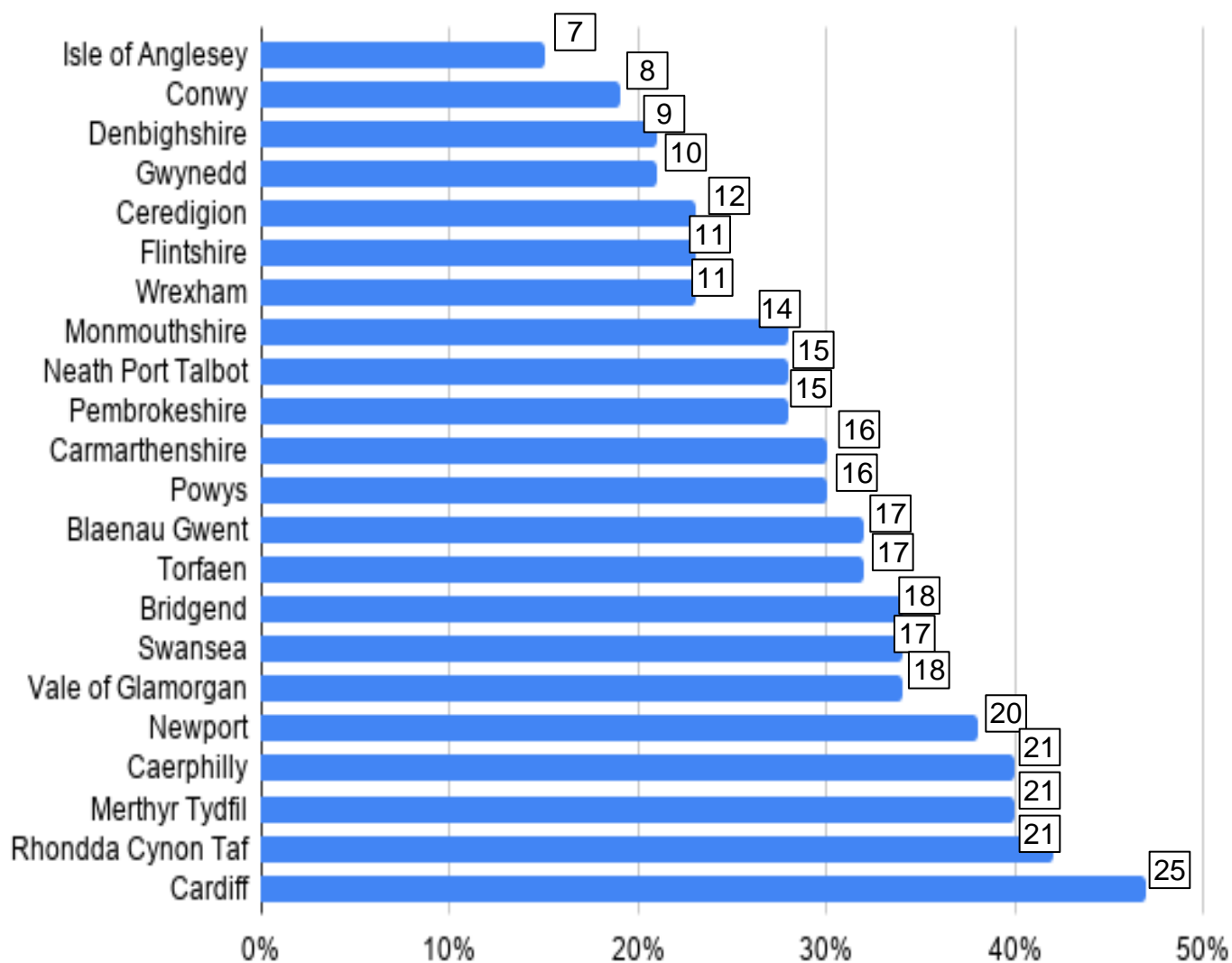
<sup>5</sup> Image taken from a Google Map created from initial mapping contacts, including but not only survey respondents, on 23/1/20. Includes only those with postcodes, ie not individual practitioners. This can be added-to as the database grows.



## About the survey respondents

The following is an at-a-glance summary<sup>6</sup>.

### Where their work with young people takes place<sup>7</sup>



<sup>6</sup> This summary merges Welsh and English surveys through manual analysis of statistics. SurveyMonkey does not allow for merging of datasets (eg Welsh/English) so responses to key questions only have been merged/manually analysed and included in this main report. Further analysis could be completed if considered worthwhile.

<sup>7</sup> The chart shows the number and percentage of organisations working in each area. Any anomalies in numbers are to do with manual removal of repetition, following generation of charts from raw data.

## Who is working where?

**Isle of Anglesey:** BBC National Orchestra of Wales; CânSing Ltd; Community Music Wales; Live Music Now Wales; Making Music; National Theatre Wales; National Youth Arts Wales; trac: Music Traditions Wales / Traddodiadau Cerdd Cymru

**Conwy:** BBC National Orchestra of Wales; CânSing Ltd; Community Music Wales; individual; Live Music Now Wales; Making Music; National Theatre Wales; trac: Music Traditions Wales / Traddodiadau Cerdd Cymru; Welsh National Opera

**Denbighshire:** BBC National Orchestra of Wales; Canolfan Gerdd William Mathias; CânSing Ltd; Community Music Wales; individual; Live Music Now Wales; Making Music; National Theatre Wales; trac: Music Traditions Wales / Traddodiadau Cerdd Cymru

**Gwynedd:** BBC National Orchestra of Wales; CânSing Ltd; Community Music Wales; Canolfan Gerdd William Mathias; Live Music Now Wales; Making Music; National Theatre Wales; National Youth Arts Wales; Sistema Cymru - Codi'r To; trac: Music Traditions Wales / Traddodiadau Cerdd Cymru

**Ceredigion:** BBC National Orchestra of Wales; CânSing Ltd; Community Music Wales; Live Music Now Wales; Making Music; Media Academy Cymru; National Theatre Wales; National Youth Arts Wales; RWCMD; Coleg Llanyddyfri; trac: Music Traditions Wales / Traddodiadau Cerdd Cymru; Young Music Makers of Dyfed;

**Flintshire:** BBC National Orchestra of Wales; CânSing Ltd; Community Music Wales; Flintshire Music Service, Theatr Clwyd; individual; Live Music Now Wales; Making Music; Music Theatre Wales; National Theatre Wales; National Youth Arts Wales; trac: Music Traditions Wales / Traddodiadau Cerdd Cymru

**Wrexham:** Arts Connection; BBC National Orchestra of Wales; CânSing Ltd; Coleg Cambria/ Wrexham Music Co-operative; Community Music Wales; individual; Live Music Now Wales; Making Music; National Theatre Wales; National Youth Arts Wales; trac: Music Traditions Wales / Traddodiadau Cerdd Cymru

**Monmouthshire:** BBC National Orchestra of Wales; CânSing Ltd; David Jones Associates; Forget-Me-Not-Productions; Live Music Now Wales; Making Music; Community Music Wales; individual; Media Academy Cymru; Music for You (individual); National Theatre Wales; National Youth Arts Wales; RWCMD; trac: Music Traditions Wales / Traddodiadau Cerdd Cymru; Upbeat Music and Arts Service Ltd

**Neath Port Talbot:** BBC National Orchestra of Wales; British Council Wales; CânSing Ltd; Community Music Wales; David Jones Associates; Forget-Me-Not-Productions; Live Music Now Wales; Making Music; Media Academy Cymru; Music for You (individual); National Theatre Wales; National Youth Arts Wales; RWCMD; trac: Music Traditions Wales / Traddodiadau Cerdd Cymru; Valley and Vale Community Arts

**Pembrokeshire:** trac: Music Traditions Wales / Traddodiadau Cerdd Cymru; BBC National Orchestra of Wales; National Theatre Wales; CânSing Ltd; Live Music Now Wales; Making Music; Community Music Wales; National Youth Arts Wales; RWCMD; Music for You; Forget-Me-Not-Productions; YMCA Swansea; Young Music Makers of Dyfed; Pembrokeshire County Council; Tanyard Youth Project Ltd

**Carmarthenshire:** BBC National Orchestra of Wales; British Council Wales; CânSing Ltd; Coleg Llanyddyfri; Live Music Now Wales; Making Music; Media Academy Cymru; National Theatre Wales; National Youth Arts Wales; RWCMD; Sinfonia Cymru; trac: Music Traditions Wales / Traddodiadau Cerdd Cymru; Welsh National Opera; Young Music Makers of Dyfed

**Powys:** Arts Connection; BBC National Orchestra of Wales; Community Music Wales; CânSing Ltd; Forget-Me-Not-Productions; individual; Live Music Now Wales; Making Music; Music for You; National Theatre Wales; National Youth Arts Wales; RWCMD; Sinfonia Cymru; trac: Music Traditions Wales / Traddodiadau Cerdd Cymru; Upbeat Music and Arts Service Ltd

**Blaenau Gwent:** National Theatre Wales; CânSing Ltd; Community Music Wales; David Jones Associates; Forget-Me-Not-Productions; Freelance; Head4Arts; individual; Live Music Now Wales; Making Music; Media Academy

Cymru; Music for You; National Youth Arts Wales; RWCMD; St Mary's Ciw primary school; trac: Music Traditions Wales / Traddodiadau Cerdd Cymru; Upbeat Music and Arts Service Ltd

**Torfaen:** BBC National Orchestra of Wales; CânSing Ltd; Community Music Wales; David Jones Associates; Forget-Me-Not-Productions; Freelance; Head4Arts; individual; Live Music Now Wales; Making Music; Media Academy Cymru; Music for You; National Theatre Wales; Operasonic; RWCMD; trac: Music Traditions Wales / Traddodiadau Cerdd Cymru; Upbeat Music and Arts Service Ltd

**Bridgend:** BBC National Orchestra of Wales; CânSing Ltd; CAVMS Ltd; David Jones Associates; Forte Project; Freelance; Media Academy Cymru; Music for You; National Theatre Wales; Live Music Now Wales; Making Music; Community Music Wales; Forget-Me-Not-Productions; RWCMD; trac: Music Traditions Wales / Traddodiadau Cerdd Cymru; Upbeat Music and Arts Service Ltd; Valley and Vale Community Arts; Welsh National Opera

**Swansea:** BBC National Orchestra of Wales; British Council Wales; CânSing Ltd; CAVMS Ltd; Community Music Wales; David Jones Associates; Forget-Me-Not-Productions; Media Academy Cymru; Music for You; Live Music Now Wales; Making Music; National Theatre Wales; National Youth Arts Wales; RWCMD; trac: Music Traditions Wales / Traddodiadau Cerdd Cymru; Welsh National Opera; YMCA Swansea

**Vale of Glamorgan:** BBC National Orchestra of Wales; CânSing Ltd; CAVMS Ltd; Community Music Wales; David Jones Associates; Forget-Me-Not-Productions; Forte Project; Live Music Now Wales; Making Music; Media Academy Cymru; Music for You; National Theatre Wales; National Youth Arts Wales; Operasonic; RWCMD; trac: Music Traditions Wales / Traddodiadau Cerdd Cymru; Upbeat Music and Arts Service Ltd; Welsh National Opera

**Newport:** BBC National Orchestra of Wales; CânSing Ltd; Community Music Wales; David Jones Associates; Forget-Me-Not-Productions; Freelance; Live Music Now Wales; Making Music; Media Academy Cymru; Menter Iaith Casnewydd; Music for You; Music Theatre Wales; National Theatre Wales; National Youth Arts Wales; Operasonic; RWCMD; Sinfonia Cymru; trac: Music Traditions Wales / Traddodiadau Cerdd Cymru; Upbeat Music and Arts Service Ltd; Welsh National Opera

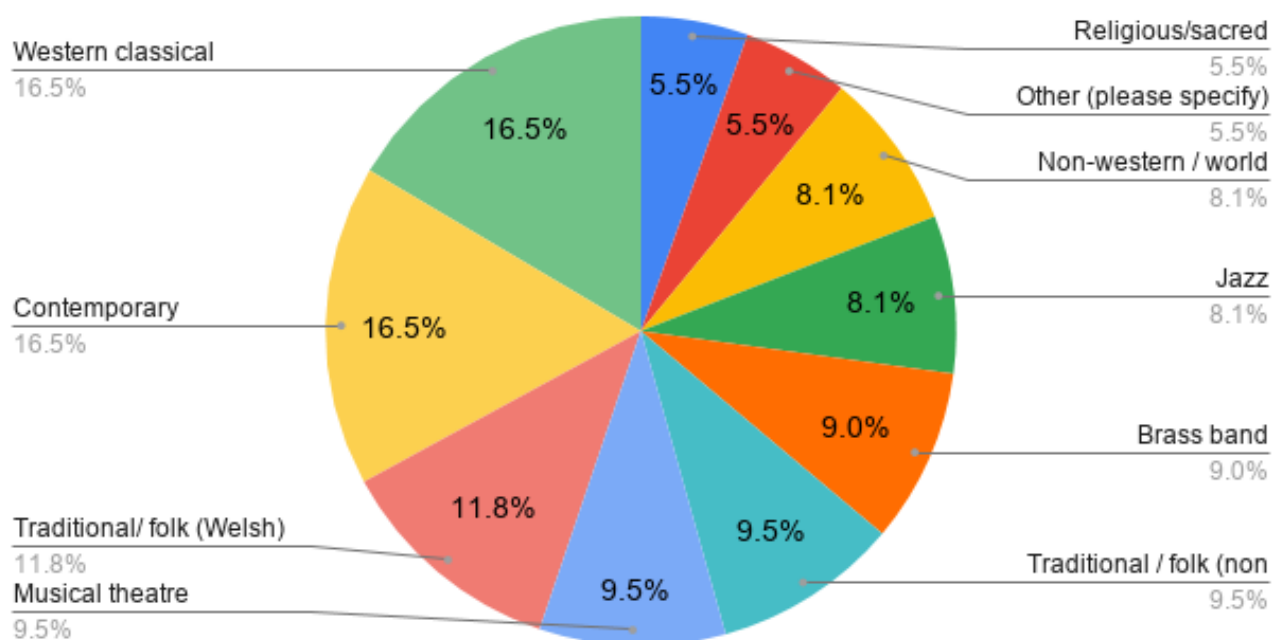
**Caerphilly:** BBC National Orchestra of Wales; CânSing Ltd; CAVMS Ltd; Community Music Wales; David Jones Associates; Forget-Me-Not-Productions; Forte Project; Freelance; Head4Arts; ; individual; Islwyn high school; Lewis School Pengam; Live Music Now Wales; Making Music; Media Academy Cymru; Music for You; National Theatre Wales; RWCMD; trac: Music Traditions Wales / Traddodiadau Cerdd Cymru; Upbeat Music and Arts Service Ltd; Welsh National Opera

**Merthyr Tydfil:** BBC National Orchestra of Wales; CânSing Ltd; CAVMS Ltd; Community Music Wales; David Jones Associates; Forget-Me-Not-Productions; Forte Project; Freelance; Head4Arts; individual; Live Music Now Wales; Making Music; Media Academy Cymru; Merthyr Tydfil County Borough Council; Music for You; National Theatre Wales; National Youth Arts Wales; RWCMD; Upbeat Music and Arts Service Ltd; Welsh National Opera; trac: Music Traditions Wales / Traddodiadau Cerdd Cymru

**Rhondda Cynon Taf:** BBC National Orchestra of Wales; CânSing Ltd; CAVMS Ltd; Community Music Wales; David Jones Associates; Forte Project; Freelance; Glyncoch Community Regeneration Ltd; Forget-Me-Not-Productions; Live Music Now Wales; Making Music; Media Academy Cymru; Music for You; National Theatre Wales; National Youth Arts Wales; Operasonic; RWCMD; Upbeat Music and Arts Service Ltd; Welsh National Opera; Valley and Vale Community Arts; trac: Music Traditions Wales / Traddodiadau Cerdd Cymru

**Cardiff:** BBC National Orchestra of Wales; Benedetti Foundation; CânSing Ltd; CAVMS Ltd; Community Music Wales; David Jones Associates; Forget-Me-Not-Productions; Forte Project; Freelance; Guitar Circus; Individual; Live Music Now Wales; Making Music; Media Academy Cymru; Menter Caerdydd; Music for You; National Theatre Wales; National Youth Arts Wales; Operasonic; RWCMD; Sound Progression; trac: Music Traditions Wales / Traddodiadau Cerdd Cymru; Upbeat Music and Arts Service Ltd; Welsh National Opera; YMCA Swansea

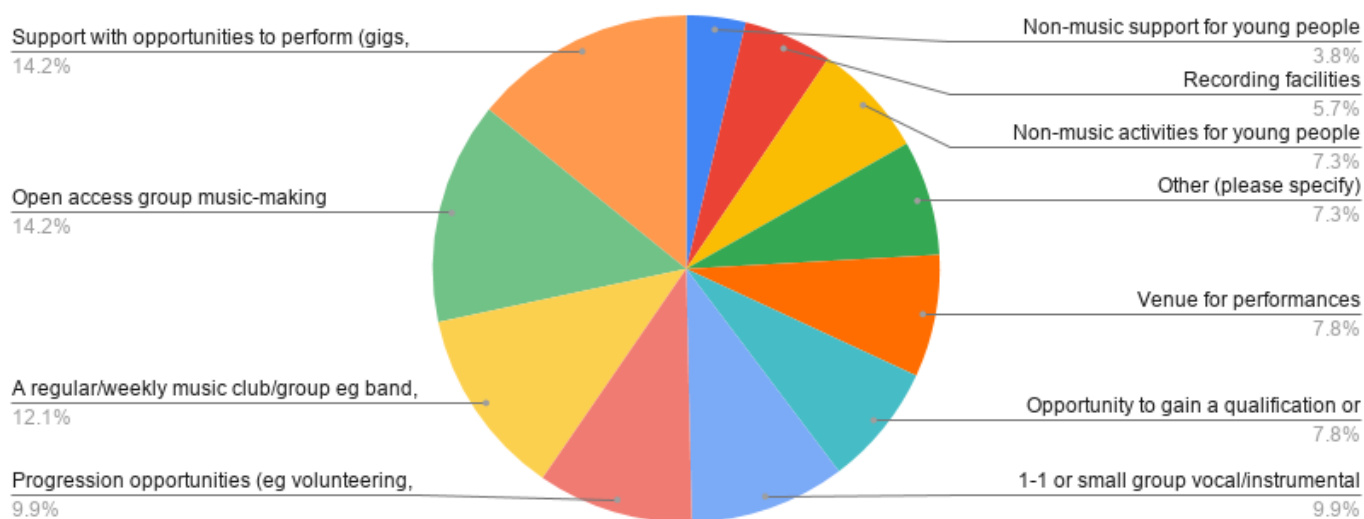
## The genres they work in<sup>8</sup>



## The languages they deliver in

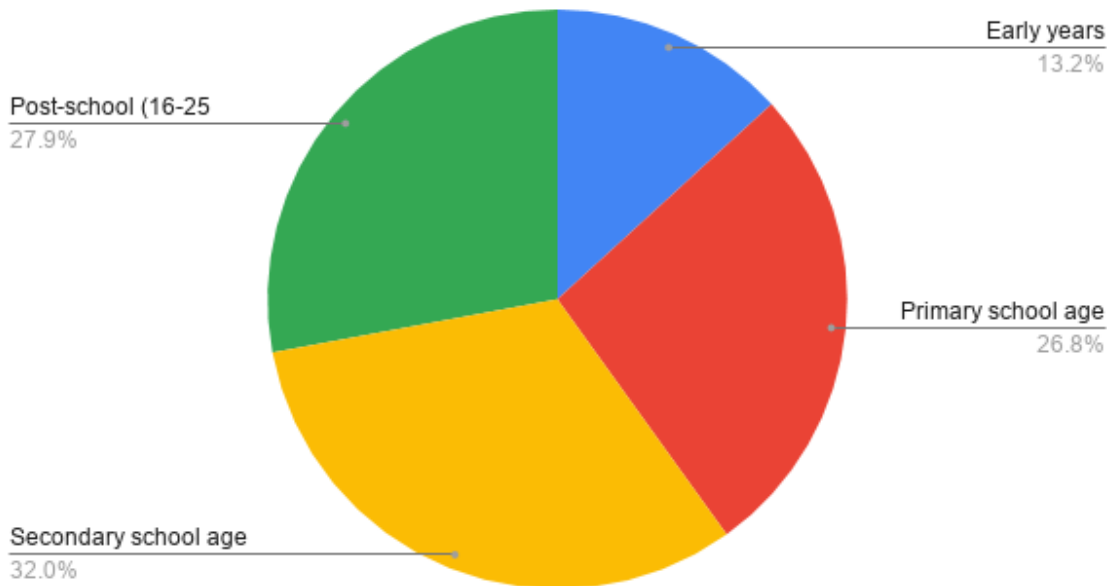
45% deliver work in Welsh; 27% do not; 27% said that they don't but could do.

## The services/opportunities they offer young people



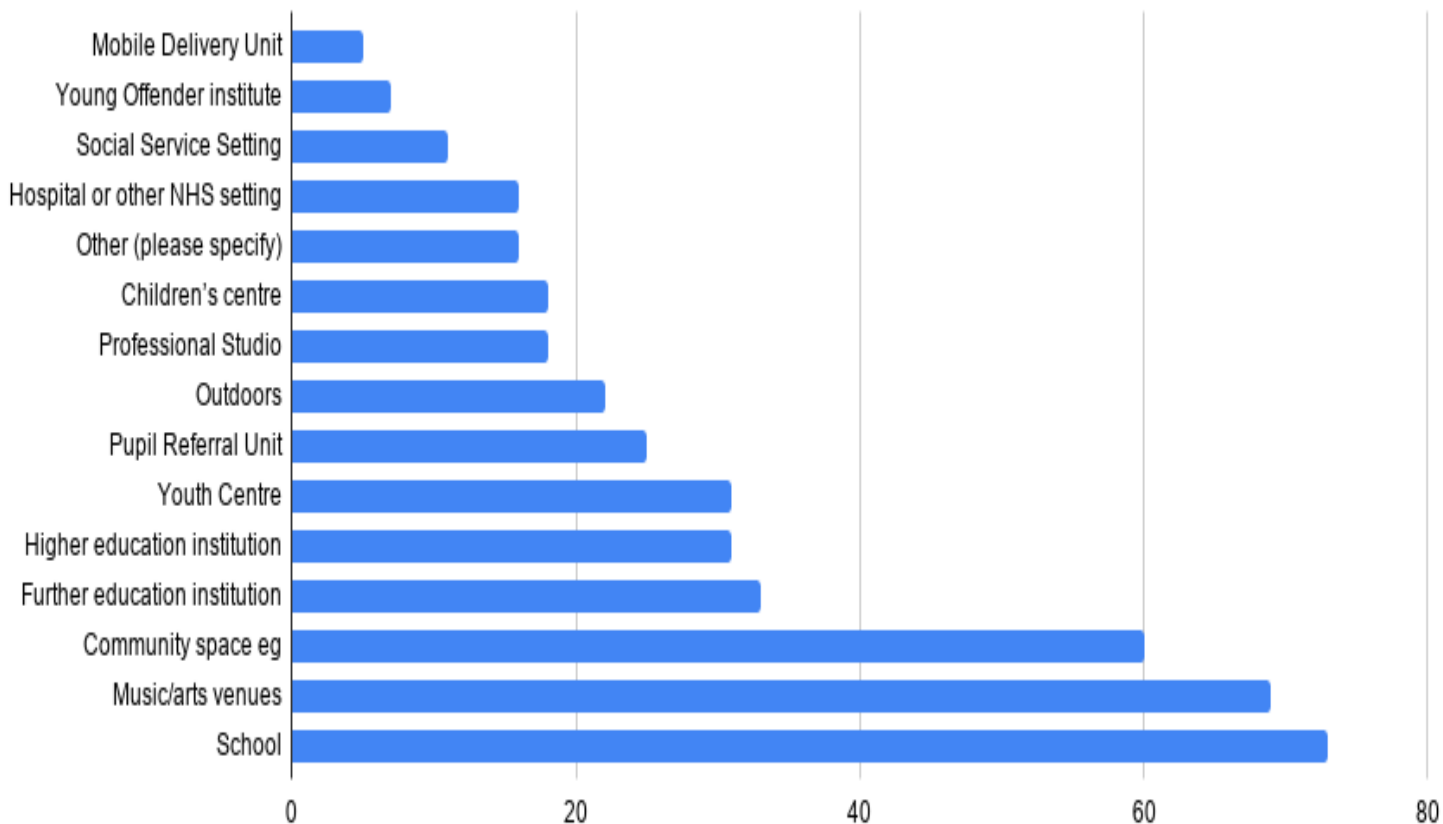
<sup>8</sup> Contemporary option in full was 'Contemporary commercial (rock, pop, urban, dance)'

### The age groups they work with



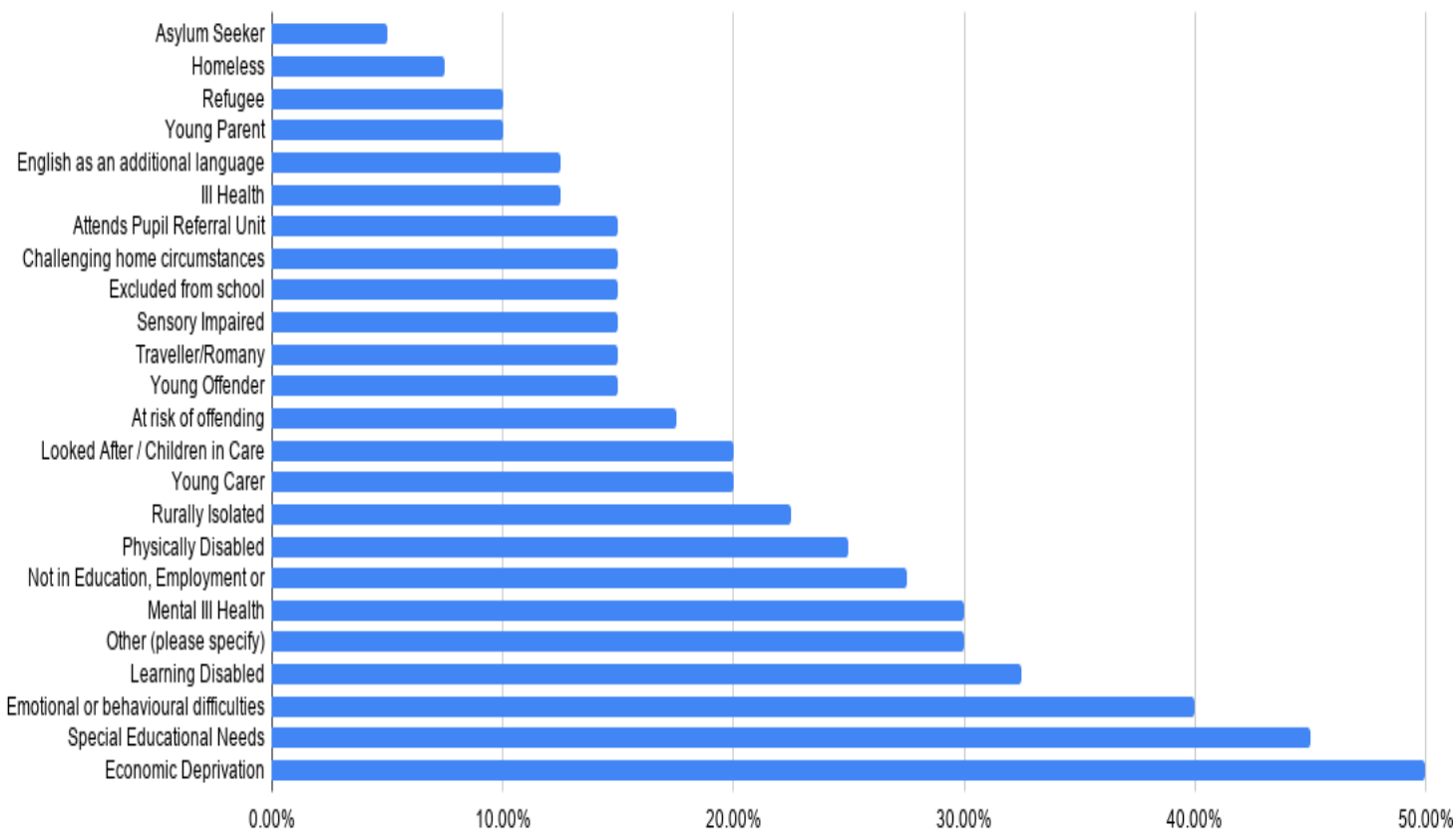
Reminder: uses total answers as 100%, not total number of organisations!

### The settings they work in

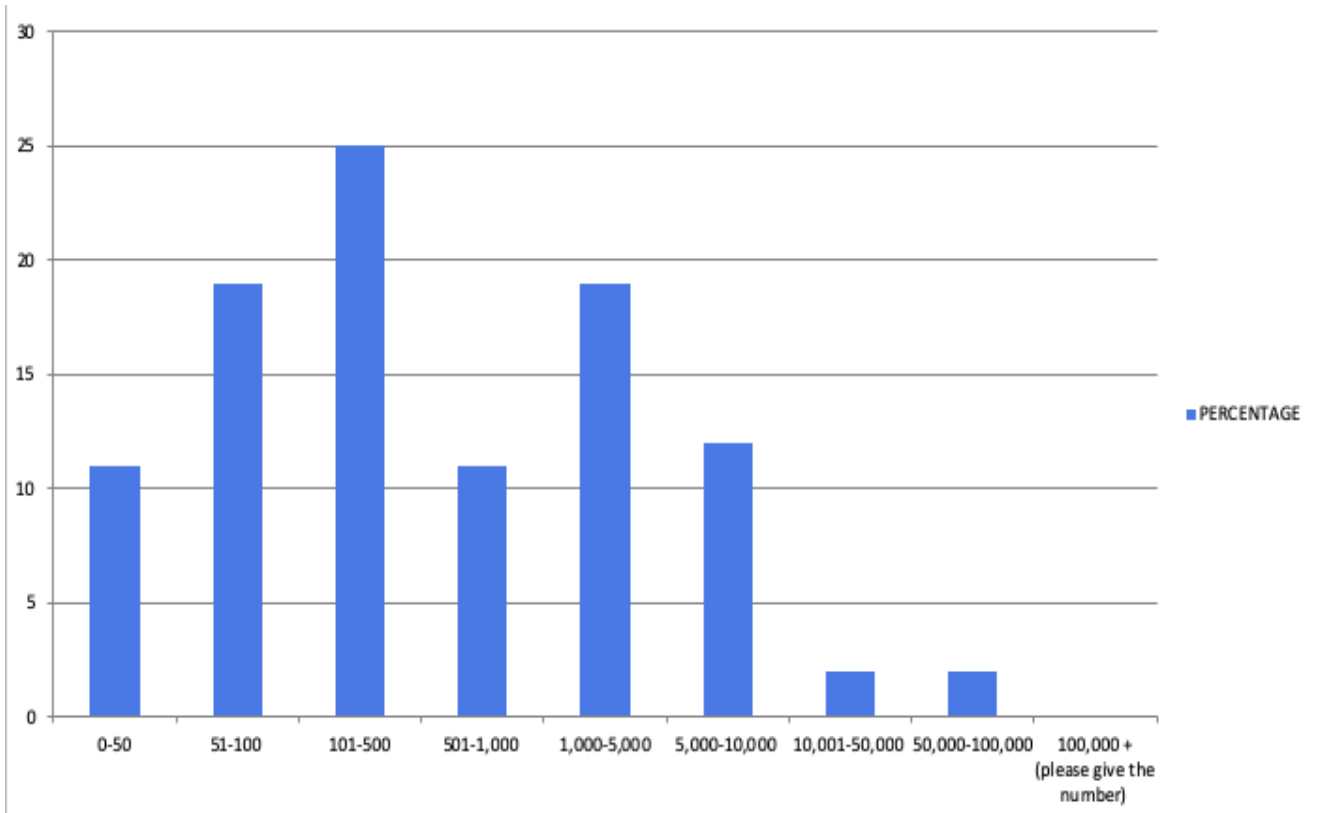




### Areas of specialism or focus on particular areas of need



### Numbers of young people they work with



## APPENDIX

### A: Questionnaire: Mapping the youth music & music education sector in Wales

ENGLISH: <https://www.surveymonkey.co.uk/r/3DJ7JBC> WELSH: <https://www.surveymonkey.co.uk/r/3WCPWRH>

This is a survey to find out about people and organisations who are supporting (or would like to support, in the case of organisations/services for young people) young people's music-making and learning in Wales, outside of schools.

This survey should take you around 5 minutes to complete (more if you want to say more!).

It has been created by Anthem, the new foundation set up by Welsh Government to invest in opportunities in music for young people in Wales. Find out more: [www.anthem.wales/about](http://www.anthem.wales/about)

Please complete the survey by Friday 10 January. NEWS FLASH: We've extended the deadline to this Weds 15/1 midnight!

*(If this is not possible, we will be keeping the survey open and continuing to gather information until 1 February, although you may miss out on initial events, opportunities and information).*

#### 1. About you

Your first name

Your last name

Job title if appropriate

Organisation if appropriate

Address                      Postcode

Email address              Telephone number

Website url                Social media handles/ @names if relevant

Other roles you may have (eg board member, partnership member)

#### 2. Are you/your organisation:

A local authority music service (or was in the past)

Arts or music organisation (charity or similar but not voluntary)

Arts or music organisation (commercial but not small business or voluntary)

Other public sector organisation

Other charity, community interest company, social enterprise or similar

Small business or sole trader (freelance)

Voluntary organisation/group

Other (please specify)

#### 3. In which counties does your work with young people take place?

Blaenau Gwent

Bridgend

Caerphilly

Carmarthenshire

Ceredigion

Swansea

Cardiff

Conwy

Denbighshire

Flintshire

Gwynedd

Isle of Anglesey

Merthyr Tydfil

Monmouthshire

Neath Port Talbot

Newport

Pembrokeshire

Powys

Rhondda Cynon Taf

Torfaen

**4. Which best describes your role in your work with young people?**

Leader/manager/project manager  
Instrumental/vocal music tutor  
Community musician, music leader or mentor  
Youth worker  
Other (please specify)

**5. What genre/s of music do you teach or facilitate?**

Contemporary commercial (rock, pop, urban, dance)  
Brass band  
Western classical  
Traditional / folk (non Welsh)  
Traditional/ folk (Welsh)  
Non-western / world  
Jazz  
Musical theatre  
Religious/sacred  
Other (please specify)

**6. Do you deliver your work with young people through the medium of Welsh?**

Yes No No, but could do (Welsh speaker/s)

**7. What services/opportunities do you offer young people?**

1-1 or small group vocal/instrumental lessons  
Open access group music-making sessions/workshops  
A regular/weekly music club/group eg band, choir, orchestra  
Venue for performances  
Support with opportunities to perform (gigs, concerts, festivals, open mic)  
Recording facilities  
Opportunity to gain a qualification or accreditation in music  
Progression opportunities (eg volunteering, internships)  
Non-music activities for young people  
Non-music support for young people  
Other (please specify)

**8. How many young people do you work with each year?**

0-50  
51-100  
101-500  
501-1,000  
1,000-5,000  
5,000-10,000  
10,001-50,000  
50,000-100,000  
100,000 + (please give the number)

**9. Are your services to young people:**

?Free to young people ?Paid-for by young people/parents  
?Both

**10. What age groups do you work with?**

Early years  
Primary school age

Secondary school age  
Post-school (16-25 years old)

**11. What settings do you work in?**

Children's centre  
Community space eg community centre, village hall  
Hospital or other NHS setting  
Mobile Delivery Unit  
Music/arts venues  
Outdoors  
Professional Studio  
Pupil Referral Unit  
School  
Social Service Setting  
Young Offender institute  
Youth Centre  
Further education institution  
Higher education institution  
Other (please specify)

**12. Do you have any specialisms or focus on particular areas of need?**

Asylum Seeker  
Attends Pupil Referral Unit  
At risk of offending  
Challenging home circumstances (domestic violence, drug/alcohol abuse)  
Economic Deprivation  
Emotional or behavioural difficulties  
English as an additional language  
Excluded from school  
Homeless  
Ill Health  
Looked After / Children in Care  
Mental Ill Health  
Not in Education, Employment or Training (NEET)  
Physically Disabled  
Learning Disabled  
Refugee  
Rurally Isolated  
Sensory Impaired  
Special Educational Needs  
Traveller/Romany  
Young Carer  
Young Offender  
Young Parent  
Other (please specify)